



Rev Alison Gilchrist
CEO GFS Perth

My faith has been shaped by my life in Jesus' communities in various parts of the globe, reading the Bible and by the prompting of the Holy Spirit. 3 Bible readings in particular have had a profound effect on how I have approached ministry delivery. The first is the Luke's story of the disciples recognising Jesus breaking bread on the road to Emmaus, the second is the feeding of the 5000, recorded in all four Gospels and the third is the parable of weeds or tares in Matthew's gospel.

gfs
perth

where
friendships flourish
and people belong
and grow

0455 507 039
www.gfspertth.com.au

GFS in Western Australia dates from 1884 when an associate from England, inspired by her UK experience, began the conversation. The first WA charter was signed in late 1888, making GFS Perth the oldest NFP organisation in the state.



Given that we carry a huge history, my first task was to reflect on that and help us to clarify the why and what of GFS Perth in 2022. Defining our organisational ethos and culture, as well as our core values was the second task, so we all had a base to work from.

WHAT DO WE DO:

We create welcoming spaces and places where friendships flourish and people can belong and grow.

WHY DO WE DO IT:

We believe that friendship is a God given gift that enables people to thrive.



WE ARE ACCESSIBLE - to all whatever their story. We celebrate diversity and are committed to helping our friends achieve their potential.

WE ARE PRAYERFUL - our faith is central to all we do so praying for our friends and ministry is a key aspect of our journey

WE ARE CREATIVE – we are innovative and imaginative, where no solution exists, we work and think creatively to find one.

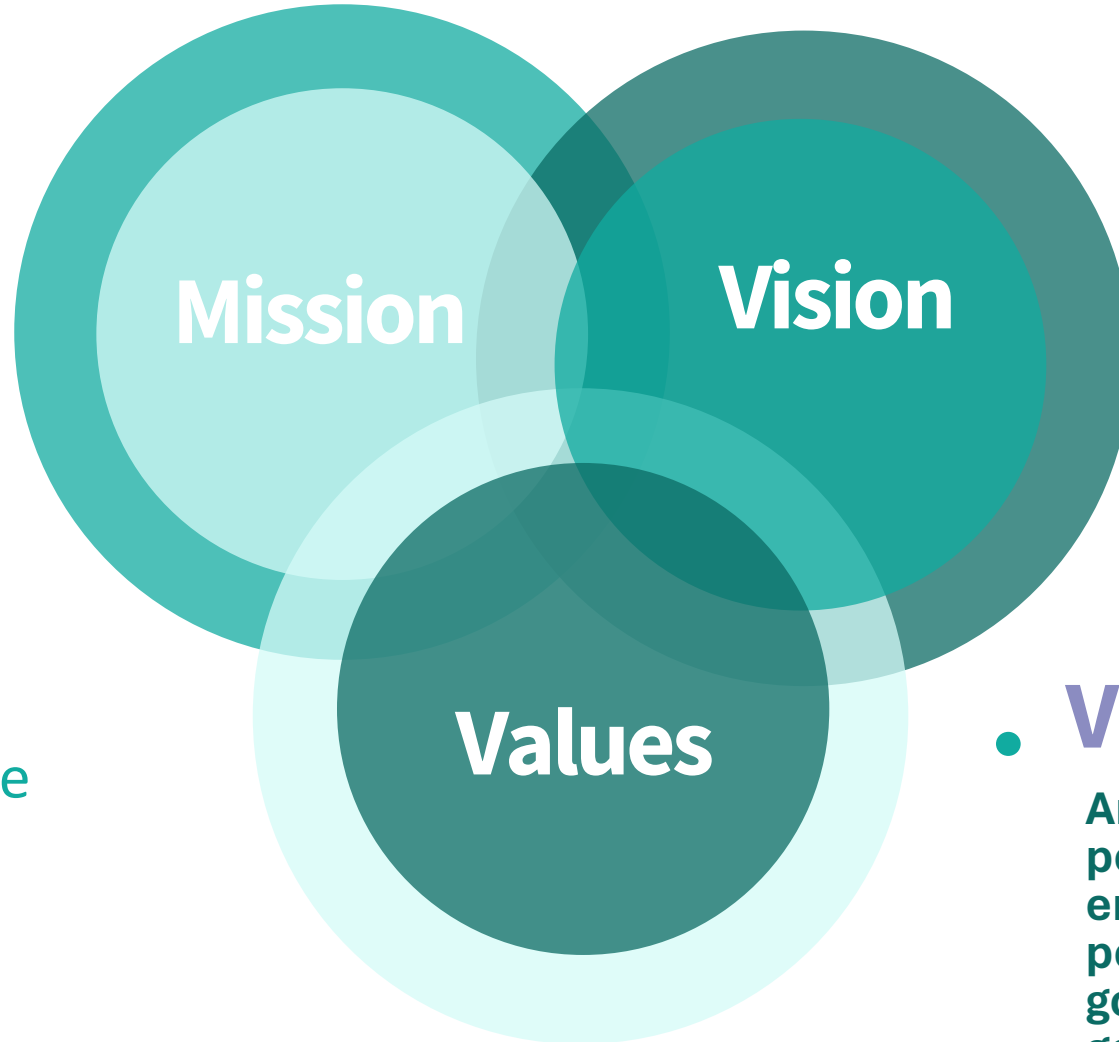


WE ARE LEADERS - pioneering new ideas, resources and programmes makes us more effective in speaking with a voice that brings people together in friendship.

WE ARE CHANGE-MAKERS - we are committed to friendship flourishing and focus on practical, positive outcomes. Our success lies in real meaningful impact on individual lives.

WE ARE COLLABORATORS - we foster co-operation between individuals and organisations, bringing credibility and enthusiasm to every partnership we undertake.

Mission – Vision - Values



- **Mission**

To see everyone in lifegiving friendships that facilitate flourishing.

OUR MOTTO: "Bear one another's burdens and so fulfil the law of Christ."

Galatians 6:2

- **Vision**

To create welcoming spaces where friendships flourish and people can belong and grow.

- **Values**

Are informed by our faith perspective. We endeavour to engage everyone with: love, joy, peace, patience, kindness, goodness, faithfulness, gentleness and self-control (Galatians 5:22-23)

This led to the coining of our mission statement which is “catalysing a friendship revolution.”



#friendshiprevolution

From that base our strategic plan, or what we call our roadmap, was put together, along with building in all our governance and compliance.

The outworking of the roadmap is where my 3 tenants of ministry delivery came in.

Many years of writing mission plans with church has taught me that too much thinking and planning leads to inaction and so I usually use the action-reflection model for all our work, incorporating the 3 aspects drawn from the Bible.

We begin with what we have and we build out from there – the loaves and the fish.

Hospitality of heart and action drives all we do – the Emmaus Road story.

Although we reflect, we don't scrutinize what we've done in a forensic way which is often destructive, instead we sit as lightly as we are able within our constraints to enable the work to flourish – the parable of the weeds/tears.

GFS Perth Roadmap

Strategic Plan 2022-2025



Presence and profile

Developing Friendship Central whilst telling the story of the past and current journey.

Governance

Develop policy hierarchy, associated procedures and ensure all governance is in place

Programmes and Partnerships

Begin to deliver GFS content at local venues and undertake networking to develop stakeholder relationship base

Develop new membership package that will reengage present membership and bring new members to the organisation .

Ensure Friendship Central is profitable and build further income sources .

Build on success and look to open other Friendship Centrals across the State

Membership

Sustainability

Future

It's not been plain sailing 🙄 ... board implosion in 2023



Alison Gilchrist
CEO



Margaret Porter
ADMINISTRATION/BOOKKEEPING ASSISTANT



Miriam Kauhiva
PROGRAMS AND PROJECTS OFFICER



Sandra Kreml
BOARD MEMBER



Charlee Hateley
BOARD MEMBER



Andrea Garvey
WEBSITE ADMINISTRATOR



Reverend Alofa Asiata
PASTORAL ADVISOR



Jill Bowman
CHAIR



Jenny Ramshaw
SECRETARY



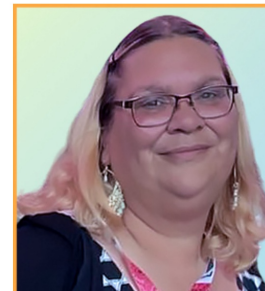
Yvonne Kador
VICE CHAIR



Darren Scott
IT SUPPORT & TECHNICAL CONSULTANT



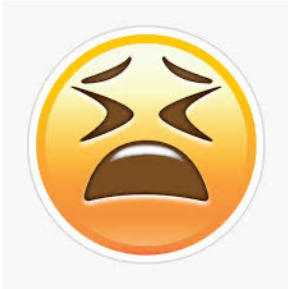
Ross Burnett
PERMACULTURE ADVISOR



Auntie Darlene Ugle
ABORIGINAL CULTURAL ADVISOR

New staff member and new board member still to be added.

Site zoning....



Until 2020 GFS Perth had its HQ at Townsend Lodge but the property, which was older and need of a costly update, became a burden.



In 2021 we purchased 4380 West Swan Road which will be redeveloped to be our new base:
FRIENDSHIP CENTRAL .

gfs



www.gfspertth.com.au

WATCH THIS SPACE

COMMUNITY GARDENING CAFE
PLAY SPACE PERMACULTURE
AND MORE...



join the #friendshiprevolution

Car Parking

Wetland feature

Composting

Bush Tucker

Bee Hives

Driveway

The Friendly Fig Cafe

Cafe/restaurant with both indoor, covered and outside seating.

Fig Tree

Fire Pit with safety features

Veggie beds

Eco/garden interaction including potting sheds

English Garden

GFS Perth HQ and Soul Central

Eco-Adventure play space

Quiet space and art area

Grove of trees (fruit, olive, nut, etc) with small children's bike trail under the leaf canopy

WEDNESDAY *women*

Want to be **FAMOUS** for:

strong supportive **FRIENDSHIPS**

heart warming **FUN**

life changing **FEATS**





New Town Toyota

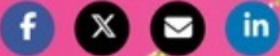
Walk for WOMEN'S CANCER



Wednesday Women
Walk Heroes 2024
Jayne and Alison

GFS PERTH
WEDNESDAY WOMEN

Share my page



Please Help Us
REACH OUR GOAL

Raised
\$4,115

Our Goal
\$3,000



Bubble Blast

2 HOURS OF BUBBLE MAKING FUN,
GAMES AND CONTESTS WITH PRIZES
Raising funds for **WOMEN'S WALK**
for Cancer Research

STIRLING SQUARE, GUILDFORD
SUNDAY APRIL 14
2 - 4pm

Donation **ON THE DAY**
of \$10 per
person or \$25
per family

**sausage sizzle -
gold coin donation**

Sponsored by GFS Perth,
Purslowe and Chipper Funerals
& St Matthews, Guildford.



friendship Fridays

making time for
friendship
every single week



FREE

FRIENDSHIP FRIDAYS meets every week. A variety of things happen from breath work to jigsaws, cuppa and chat, meditation to meaning making, games and take homes, and more. You can drop by any week.

9 - 11.30 AM
CHURCH HALL
STIRLING SQUARE
GUILDFORD



Because we know life is hectic and getting to something every time it meets is often a stretch, Sociables do not have any set dates or times, what we do is share via

SOCIABLE SATURDAY'S FACEBOOK PAGE

where we will post random meet-ups for you to join us when you can for things like brekky or brunch, a walk by the river, frisbee in the park, a picnic on the beach, and we are open to your ideas for other things we might do.

WE LOOK FORWARD TO BEING SOCIABLE WITH YOU SOON



Watch out for first event in January 2023





Engaging Generations is a social mentoring initiative where people of all ages come together to build a stronger and more connected community through mutual sharing, learning & support.



Over the course of the past 12 months Sunflower Club has run term time for two hours on a Monday morning at a local school. It has been so successful the principal has asked us to run two clubs an hour each to reach a wide group of children.

Engagement Generations team has offered over 200 contact hours during that time.



letter link up
connecting the generations

one letter
at a time



240+ letters, one each term, were exchanged between children and older members of the local community - extending writing skills and bring joy to all involved.

Our latest catchphrase is catching on quickly especially in our rapidly increasing social media following.

A woman with curly hair, wearing a white long-sleeved shirt, is smiling and gesturing with her hands. The background is a solid teal color.

Start a **TREND** -
invite a **FRIEND**

Research is definitive -
our world is getting
lonelier.

There has never been a
better time to be a
TRENDSETTER

The logo for 'gfs perth' is located in the bottom right corner of the advertisement. It features the letters 'gfs' in a stylized, lowercase font, with a small heart symbol to the right. Below 'gfs' is the word 'perth' in a smaller, lowercase font, all contained within a teal rounded rectangle.A man with short dark hair, wearing a blue denim jacket over a patterned t-shirt, is smiling and pointing towards the camera. The background is a solid teal color.

Start a **TREND** -
invite a **FRIEND**

Research is definitive -
our world is getting
lonelier.

There has never been a
better time to be a
TRENDSETTER

The logo for 'gfs perth' is located in the bottom right corner of the advertisement. It features the letters 'gfs' in a stylized, lowercase font, with a small heart symbol to the right. Below 'gfs' is the word 'perth' in a smaller, lowercase font, all contained within a teal rounded rectangle.